

Qwz 3

1 $H_0 \mu = 4000$

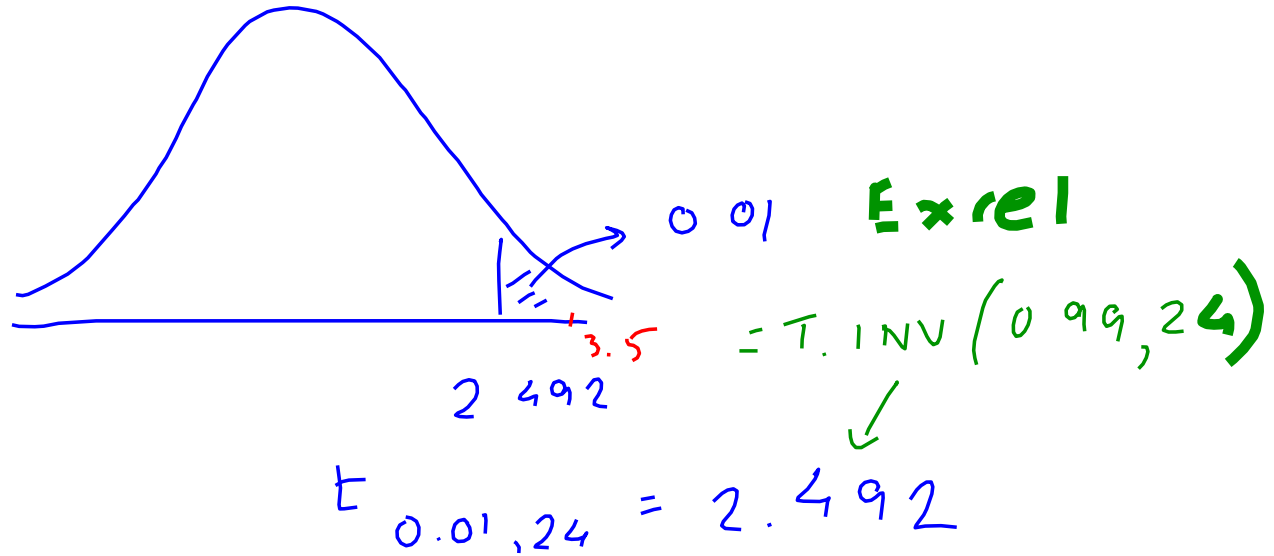
$H_a \mu > 4000$

2 $\alpha = 0.01$

3 $t = \frac{4014 - 4000}{20/\sqrt{25}} = 3.5$

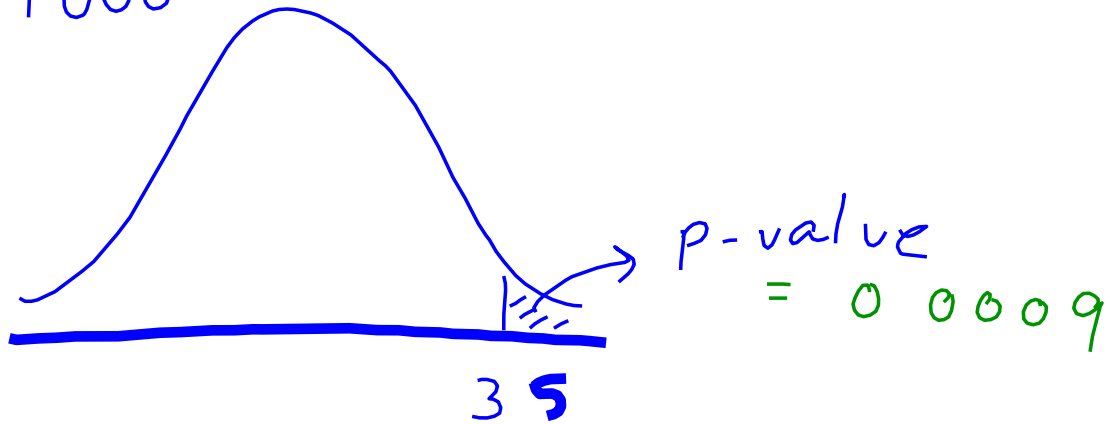
4. t

5 critical value



6 Reject H_0

7 Suff evidence that
strength > 4000



$$\text{Excel } T \text{ DIST RT}(35, 24) \\ = 0.0009$$